

MODEL 41-85, CODES 121 AND 122

SPECIFICATIONS

Models 41-85, Codes 121 and 122, are five (5) tube portable battery or 115 volt A. C.-D. C. operated superheterodyne radios covering standard broadcast and Short Wave frequencies. In general, Codes 121 and 122 are similar with the exception of the Tube types. Code 121 uses LOKTAL tubes and Code 122, OCTAL tubes.

Each Code of this Model includes a self-contained loop aerial; permanent Magnet speaker; pentode audio output stage and an automatic volume control circuit.

TUNING RANGES: 540 to 1600 K. C.

6 to 15 Me.

INTERMEDIATE FREQUENCY: 455 K. C.

PHILCO TUBES USED:

Code 121: 1LA6, converter; 1LN5, I. F. amplifier; 1LH4, 2nd detector, 1st audio; 1LA4, audio output; 1I7Z6G, rectifier.

Code 122: 1A7G, converter; 1N5G, I. F. amplifier; 1H5G, 2nd detector, 1st audio; 1A5G, audio output; 1I7Z6G, rectifier.

EXTERNAL AERIAL AND GROUND

An especially designed loop antenna is built into the cabinet for portable use. For maximum performance however, in permanent or semi-permanent installations (such as regular camps, in the home, etc.) provisions have been made in the radio to connect regular outside antenna. Two leads are located on the inside of the cabinet. Connect the aerial lead to the white wire and the ground lead to the black wire. These leads are readily accessible when the cabinet back is snapped off.

POWER SUPPLY AND BATTERIES: 115 volts, A. C.-D. C., or a Philco combination A-B battery pack type P60A-8F4.

For portable battery operation wrap the powerline cord around its holders clamp on the back of the cabinet and insert the plug end into the slots provided on the chassis.

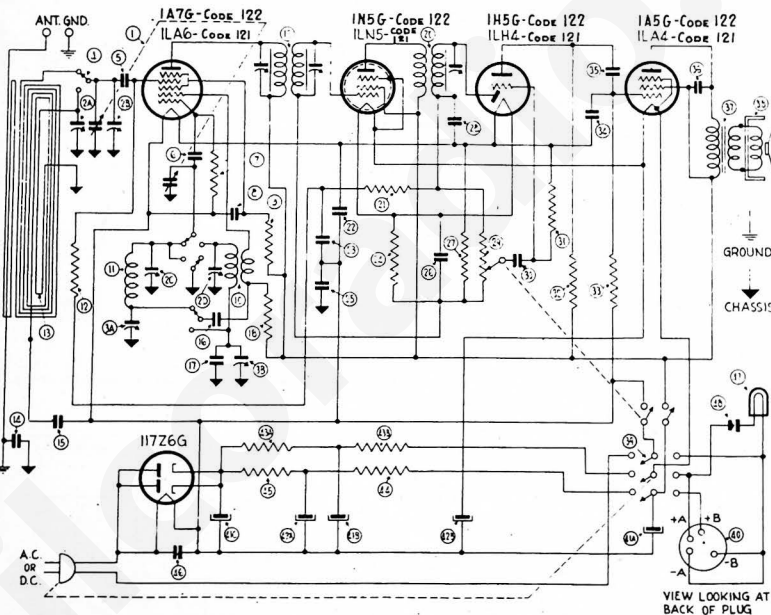
To install the battery remove the back by pulling it out gently at the top and lifting up. Care should be taken not to loosen the wires attaching the loop antenna to the chassis when inserting the battery.

Observe the arrangement of the pins on the plug of the battery cable and the corresponding holes in the socket of the battery so you will be sure to insert them correctly. Insert the plug into the battery firmly.

To operate on a 115 volt A. C.-D. C. power supply remove the powerline cord plug from the slots on the chassis and insert into a power receptacle.

A good ground connection is essential when an outside aerial is used.

External loop aerial connections are also provided on the side of the cabinet for connecting an additional portable loop aerial. The external aerial should be used on trains, hotels, or other locations where signal strength is weak. The Philco Auxiliary Aerial, Part No. 45-2808 is especially designed for installations of this type.



Replacement Parts — Model 41-85, Codes 121 and 122

SCHE. No.	DESCRIPTION	PART No.	SCHE. No.	DESCRIPTION	PART No.	SCHE. No.	DESCRIPTION	PART No.
1	Tuning Condenser	31-2459	35	Tubular Condenser (.01 mf., 400 volts)	30-4572	11	Spring (Indicator Mounting)	28-8947
2	Padder	31-8347	36	Mica Condenser (660 mmf.)	60-186127	12	Cam and Hub Assembly	28-9723
3	Wave Switch	42-1570	37	I. F. Transformer	32-8130	13	Socket (Rectifier)	27-6137
4	Mica Condenser (110 mmf.)	60-111157	38	Speaker	36-1506	14	Socket (R. F., I. F., Audio Tubes)	36-8939
5	Mica Condenser (110 mmf.)	60-111157	39	Cone Assembly (for Speaker 36-1506-1)	36-4158	15	Code 121	55-0878
6	Resistor (220,000 ohms, 1/2 watt)	33-422154	40	Automatic Switch	42-1833	16	Socket Assembly (Pilot Lamp)	36-8939
7	Tubular Condenser (.05 mf., 400 volts)	30-45157	41	Battery Cable	41-3526	17	Code 122	36-8939
8	Tubular Condenser (.05 mf., 400 volts)	30-45157	42	Electrolytic Condenser (20 mf., 10 mf., 10 mf., 150 volts)	30-2452	18	Socket (R. F., I. F., Audio Tubes)	27-6133
9	Resistor (33,000 ohms, 1/2 watt)	33-33134	43	Electrolytic Condenser (10 mf., 150 volts; 20 mf., 25 volts)	30-2453	19	Code 121	36-1506
10	S. W. Oscillator Transformer	32-3331	44	Filament Resistor (1500 ohms, 1500 ohms)	33-3387	20	Spring (Indicator Mounting)	28-8947
11	S. C. Oscillator Transformer	32-3431	45	Resistor (1500 ohms, 1/2 watt)	33-215334	21	Spring (Pilot Lamp)	28-8952
12	Resistor (1 meg., 1/2 watt)	33-3384	46	Resistor (1500 ohms, 1/2 watt)	33-215334	22	Terminal Panel (External Loop) Code 121	27-6147
13	S. W. Loop	76-1042	47	Tubular Condenser (.05 mf., 400 volts)	30-4518	23	Terminal Panel (External Loop) Code 122	27-6141
14	Tubular Condenser (.0015 mf., 200 volts)	30-4555	48	Pilot Lamp	34-2031	24	Tube Shield	56-1586
15	Tubular Condenser (.1 mf., 400 volts)	30-4425	49	Push-button (Pilot Lamp)	27-4844	25	Tube Shield Clip	56-1587
16	Mica Condenser (500 mmf.)	60-150137	50	Operating Contact	56-1487			
17	Mica Condenser (3000 mmf.)	60-233334						
18	Resistor (4700 ohms, 1/2 watt)	33-247334						
19	1st I. F. Transformer	32-3266						
20	2nd I. F. Transformer	32-3266						
21	Resistor (4.7 meg., 1/2 watt)	33-4425						
22	Tubular Condenser (.1 mf., 400 volts)	30-4518						
23	Tubular Condenser (.05 mf., 400 volts)	30-4518						
24	Resistor (3300 ohms, 1/2 watt)	30-4572						
25	Tubular Condenser (.25 mf., 400 volts)	30-4604						
26	Tubular Condenser (.01 mf., 400 volts)	30-4572						
27	Resistor (3300 ohms, 1/2 watt)	33-233334						
28	Mica Condenser (250 mmf.)	60-125137						
29	Volume Control (1 meg.)	33-5390						
30	Tubular Condenser (.01 mf., 400 volts)	33-4572						
31	Resistor (1 meg., 1/2 watt)	33-510184						
32	Resistor (1 meg., 1/2 watt)	33-521854						
33	Resistor (3.2 meg., 1/4 watt)	33-510184						
34	Mica Condenser (110 mmf.)	60-111157						

MISCELLANEOUS PARTS

Cable (Power)	L-3199
Cabinet	10473B
Drive Card	33-233334
Dial Pointer	27-4888
Spring (Drive Cord)	28-8882
Tuning Shaft	56-6080
Washer (Tuning Shaft)	57-0127
Indicator	56-1418
Bearing (Indicator)	56-6045
Screw (Indicator Mounting)	W-2101

MOUNTING PARTS

Clamp (Electro Condenser)	56-1468
Clip (Coil Mounting)	28-9002
Eyelet (Battery Cable)	W-1373
Eyelet Socket Mounting	W-1409
Groundnut	W-2749
Nut (Tuning Light Mounting)	W-124
Nut (I. F. Transformer)	W-624
Nut (Tuning Condenser Mounting)	W-1543
Spacer (Tuning Condenser Mounting)	28-9565
Screw (Switch Mounting)	28-6032
Screw (Chassis Mounting)	W-2067
Screw (Automatic Switch Mounting)	W-247
Screw (Tuning Condenser Mounting)	W-523
Screw (Loop Terminal Panel)	W-825
Washer (Chassis Mounting)	W-410